

Suzuki Swift ZC33S Enlarged Cold Side Boost Pipe Kit Fitting Instructions

Tools Required:

- Ratchet and Socket Set
- Jubilee Flexi-Driver or Flat-Blade Screwdriver

Kit Contents:

- 1x AIRTEC Motorsport Replacement Hard Pipe
- 1x Pro Hoses Silicone Hose Kit
- **Fitting Kit:**
 - 1x M6x16mm Socket Head Bolt
 - 1x M6x12mm Socket Head Bolt
 - 2x M6 Washers
 - 4x 70mm Jubilee Clips



PLEASE THOROUGHLY READ THESE INSTRUCTIONS AND MAKE SURE YOU ARE FAMILIAR WITH THE STEPS BEFORE CARRYING THEM OUT

Instructions:

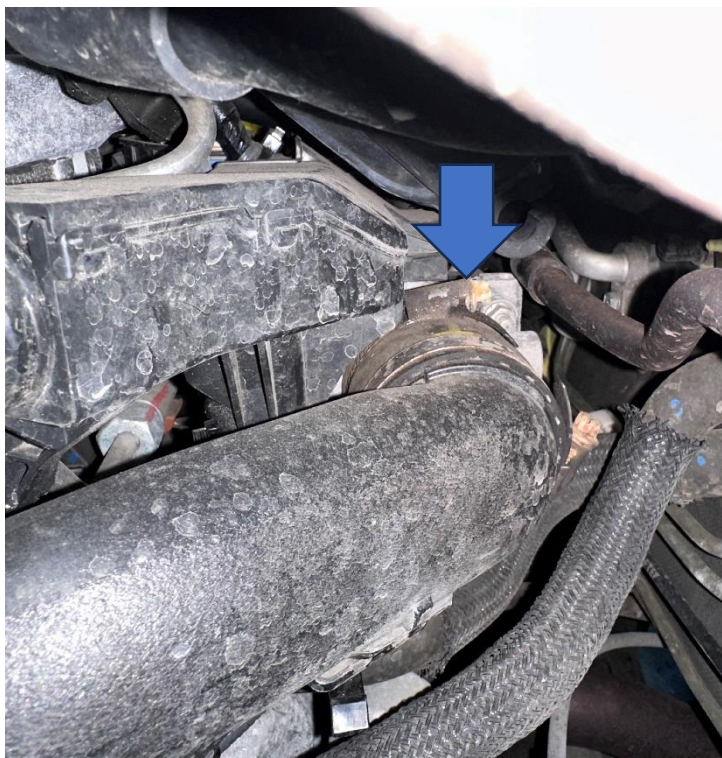
1. Open the bonnet and start by removing the engine cover, lift it up from the right corner and it will 'pop' off its mounting tabs.



2. At the back of the engine bay, locate the air feed and disconnect it from the back of the air box and the hard plastic pipe at the front. There are two small hoses that are attached to the back of the hose that you will need to disconnect as you take the hose out of the engine bay (blue arrows show position).



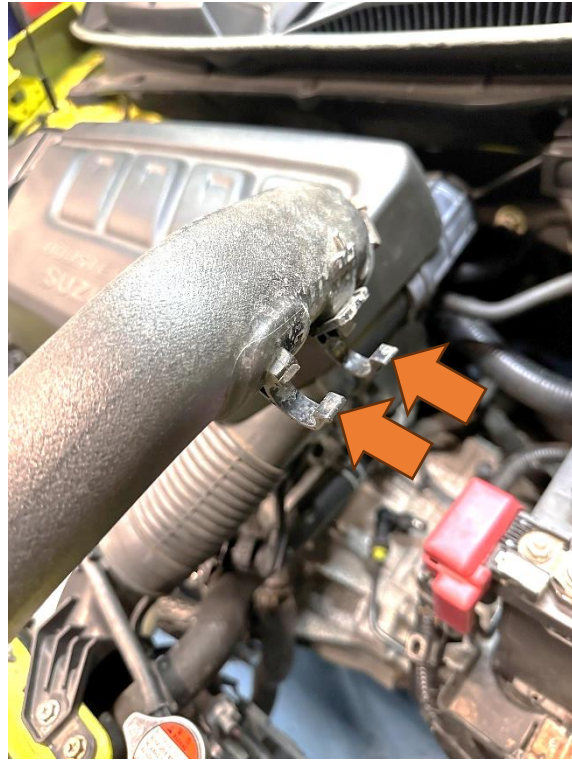
3. To remove the original boost pipe work, first locate the hose attached to the throttle body at the back of the engine and undo the jubilee clip closest to the throttle body using an 8mm socket or flat-blade screwdriver.



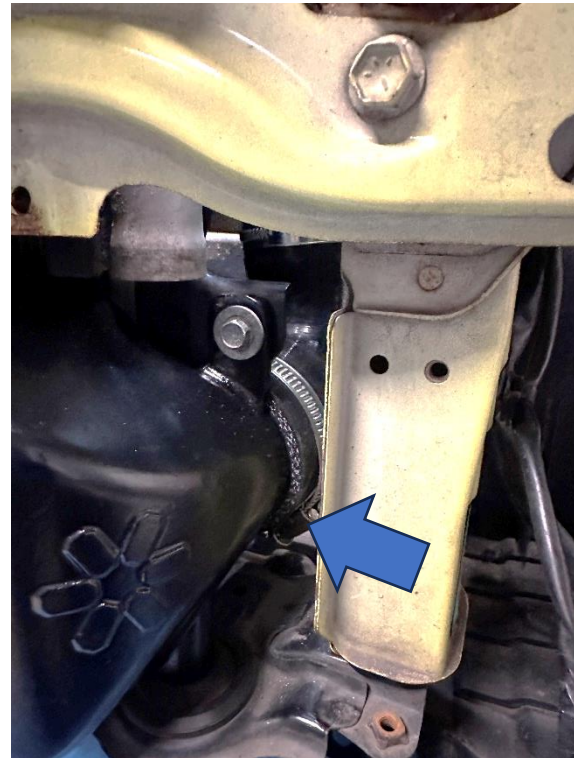
4. Now undo the 10mm bolts holding the MAP sensor (blue arrow) and boost pipe to the engine (orange arrow), and carefully place the MAP sensor aside.



5. Undo the jubilee clip attaching the silicone hose to the hard pipe bolted to the side of the radiator assembly. You will then be able to remove the silicone hose, hard pipe, and rear silicone hose from the car. As you remove the hard pipe, you will need to remove the hose clipped into it (orange arrows show position).



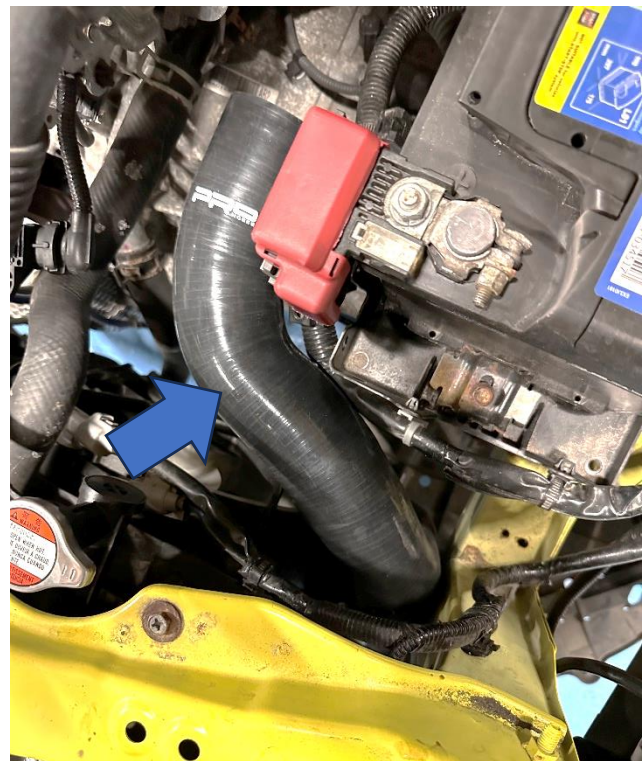
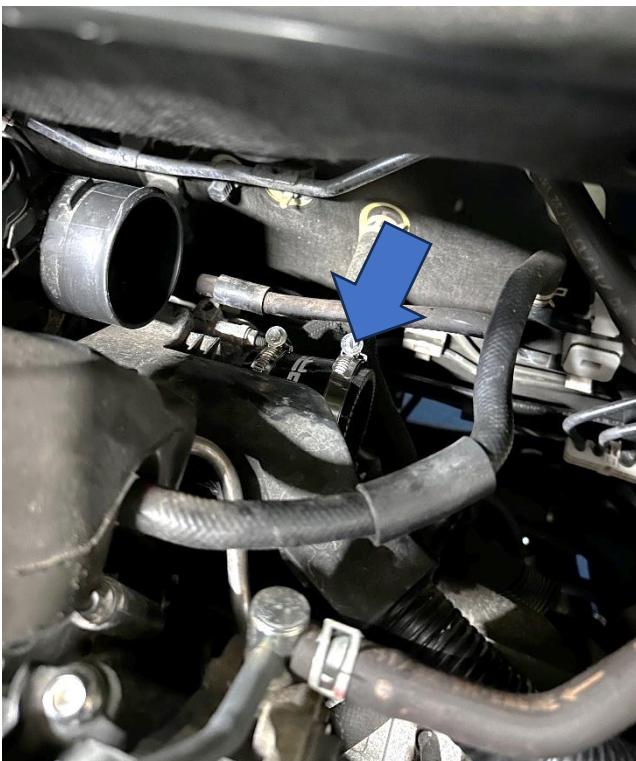
6. Undo the jubilee clip attaching the silicone hose to the intercooler. You may need to remove either the under tray or bumper to gain access to this. Please refer to the AIRTEC Motorsport intercooler fitting instructions to remind yourself of these steps, if required.



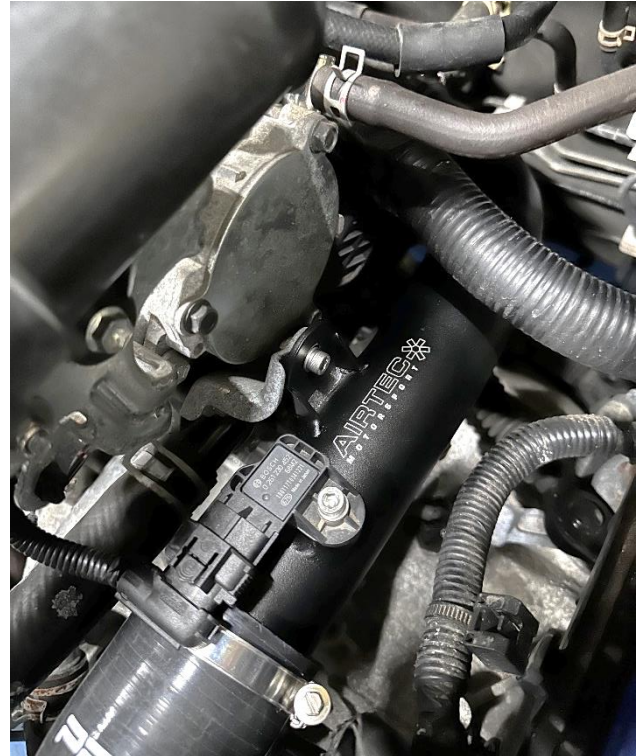
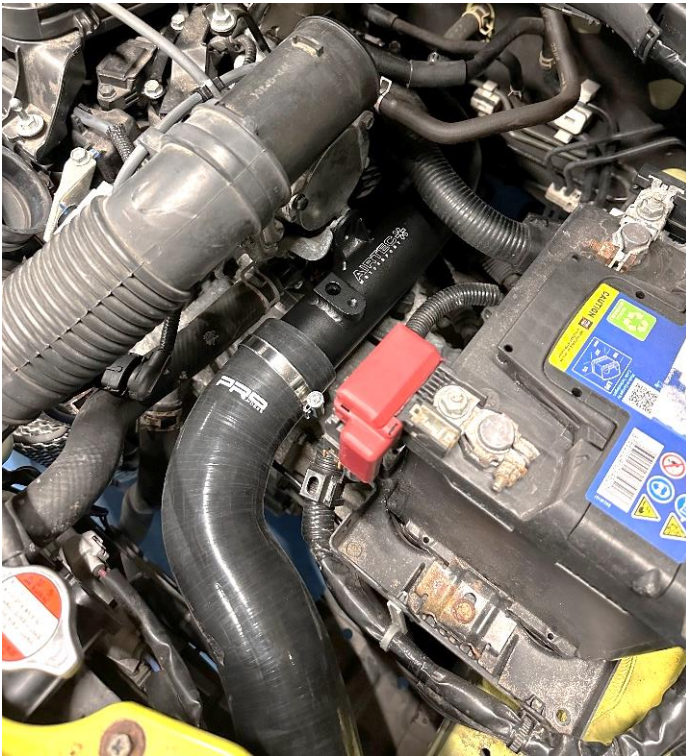
7. Undo the two 10mm bolts holding the hard pipe to the radiator assembly and then remove the hard pipe and silicone hose that attaches to the intercooler from the car.



8. Now install both of the new silicone hoses into place with jubilee clips but do not tighten at this stage.



9. Install the new hard pipe in place and secure in place with the supplied M6x16mm Socket Head bolt with washer. Once happy with the positioning, proceed to fully tighten the bolt and all jubilee clips. Then reinstall the MAP sensor with the supplied M6x12mm Socket Head bolt and washer.



10. Finally, reinstall the engine cover.

