

Suzuki Swift ZC33S Intercooler Fitting Instructions

Tools Required:

- Ratchet and Socket Set
- Cross-Head Screwdriver
- Trim Removal Tool or Flat-Blade Screwdriver

Kit Contents:

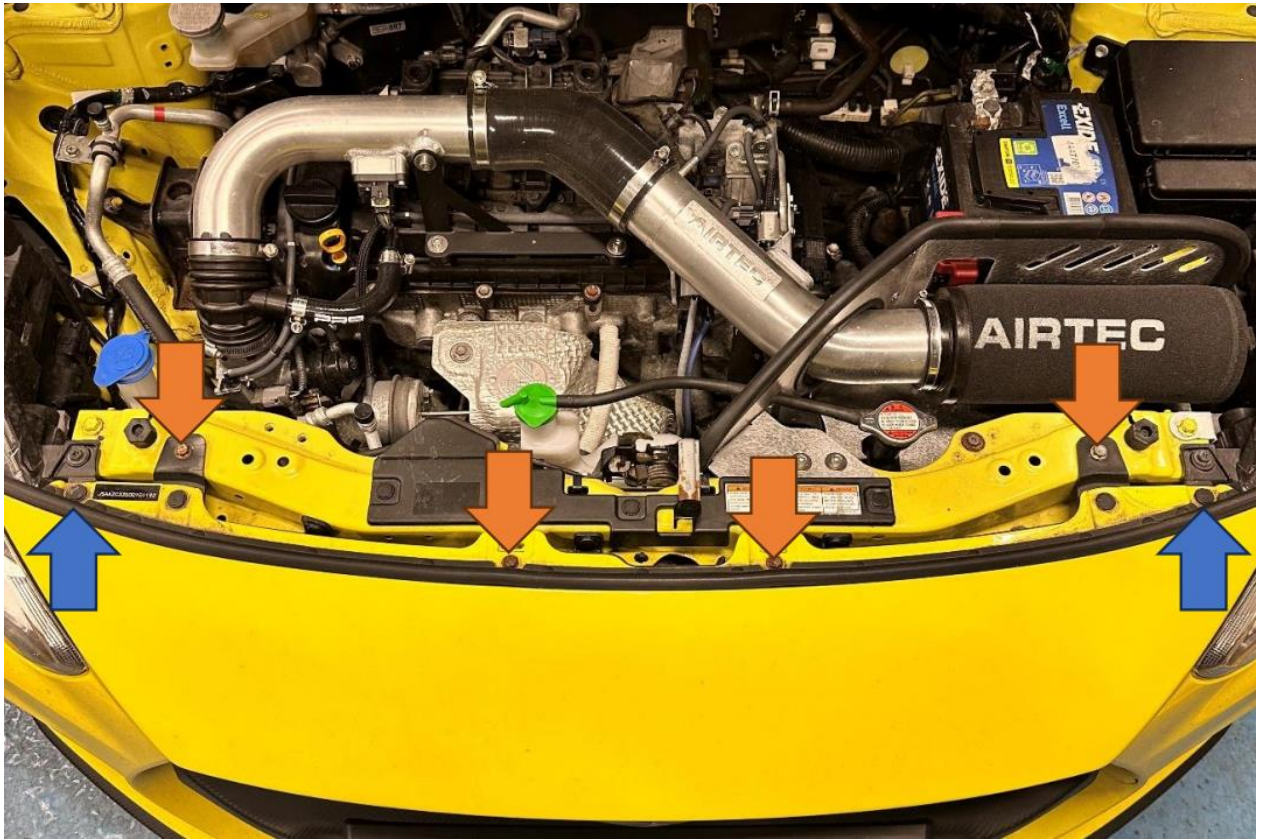
- 1x AIRTEC MOTORSPORT Intercooler
- 1x Pro Hoses Silicone Hose Kit
- 1x Temperature Sensor Relocation Bracket
- **Fitting Kit:**
 - 1x M6x12mm Socket Head Bolt
 - 1x M6 Washer
 - 2x 60mm Jubilee Clips
 - 2x 70mm Jubilee Clips



PLEASE THOROUGHLY READ THESE INSTRUCTIONS AND MAKE SURE YOU ARE FAMILIAR WITH THE STEPS BEFORE CARRYING THEM OUT

Instructions:

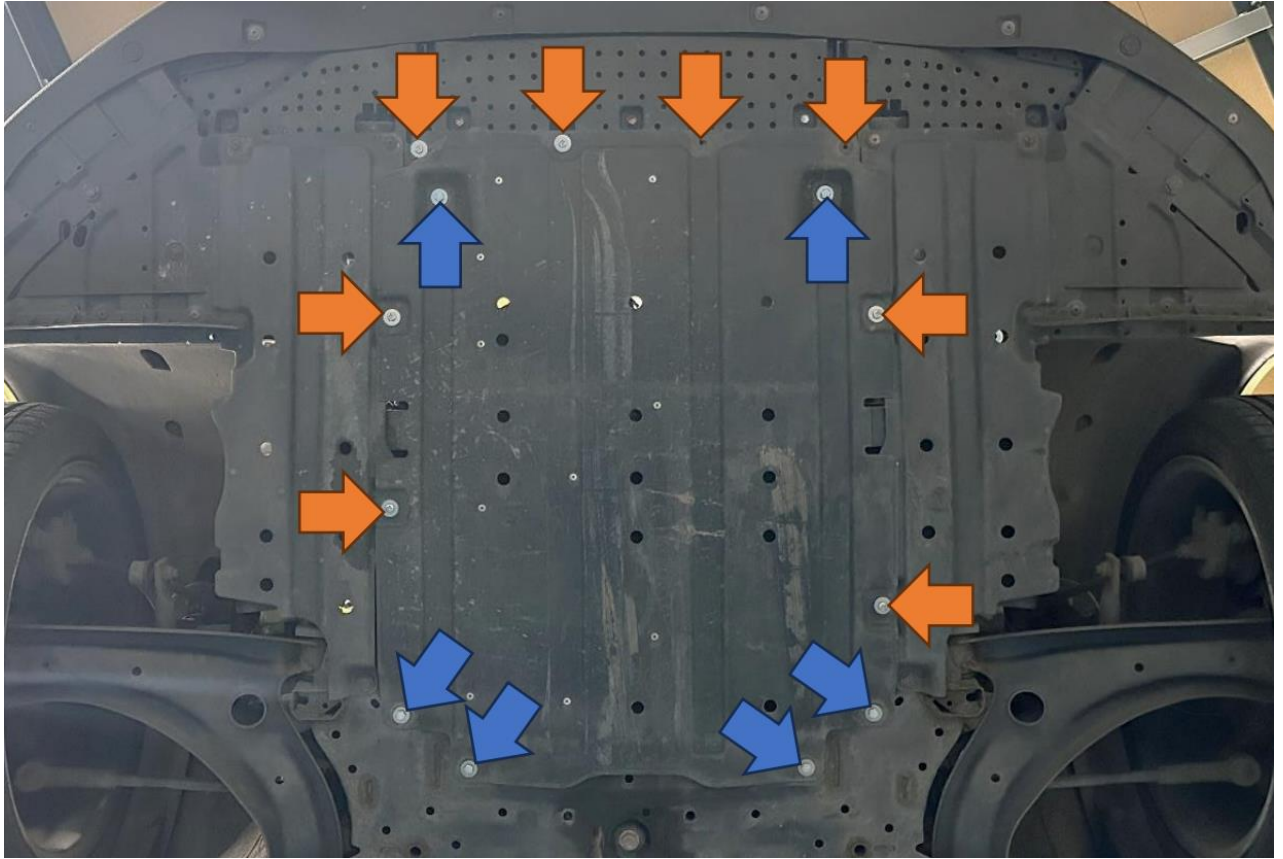
1. To start removing the bumper, undo the four 10mm bolts (orange arrows) along the top of the bumper along with two plastic trim clips (blue arrows).



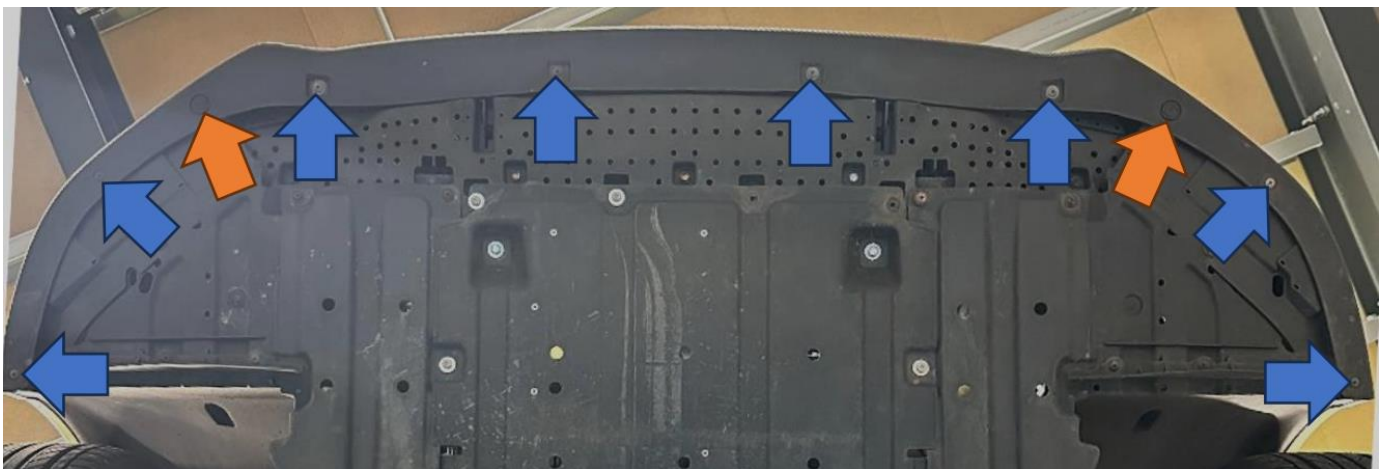
2. Inside each wheel arch liner, remove the cross headed screw attaching the bumper to the wing.



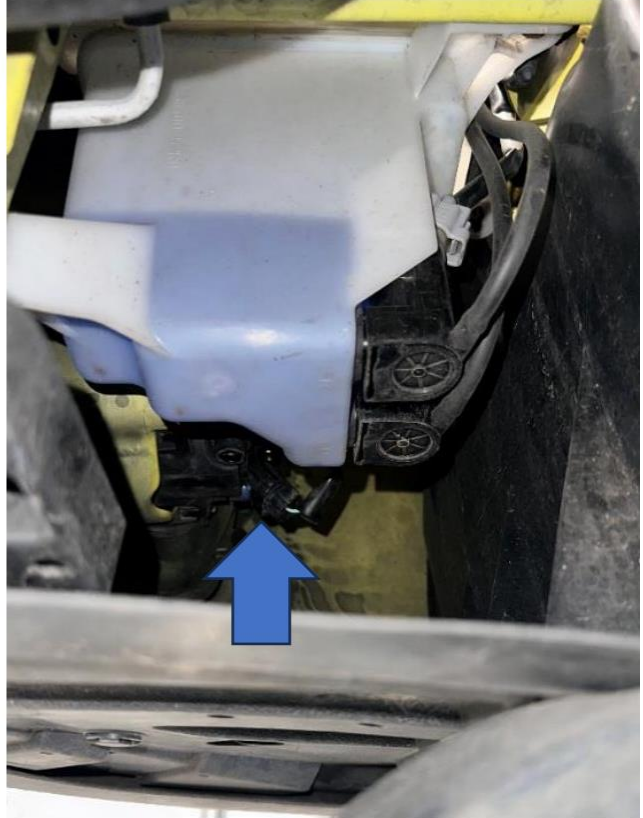
3. Working under the car remove the undertray by undoing the 10mm bolts (blue arrows) and cross headed screws (orange arrows) and then put it aside.



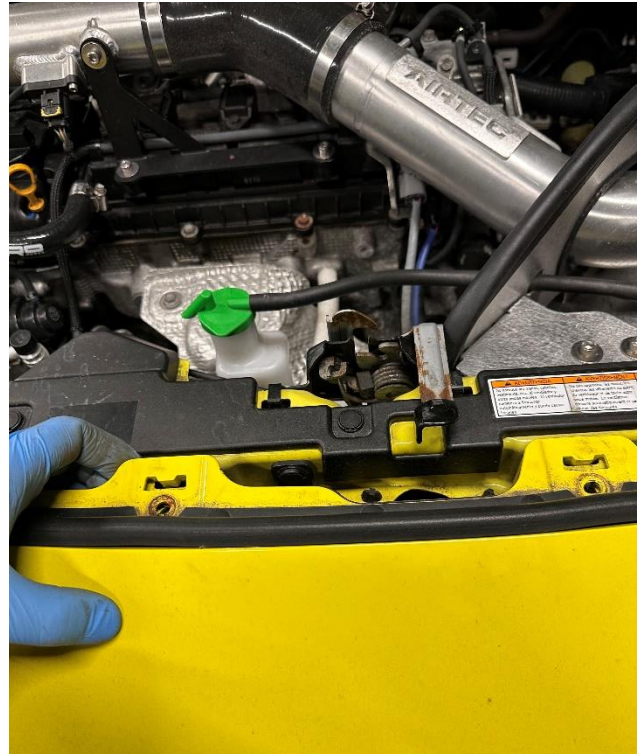
4. Remove the eight cross-headed screws (blue arrows) holding the bottom of the bumper to the car along with two plastic push fits (orange arrows).



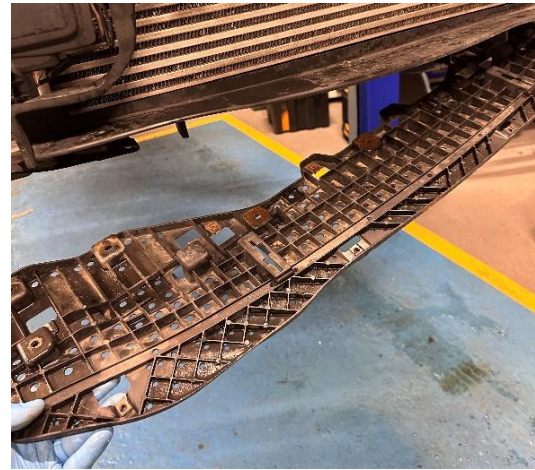
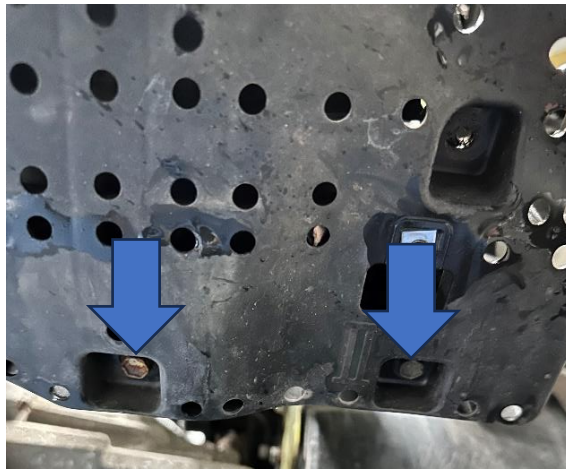
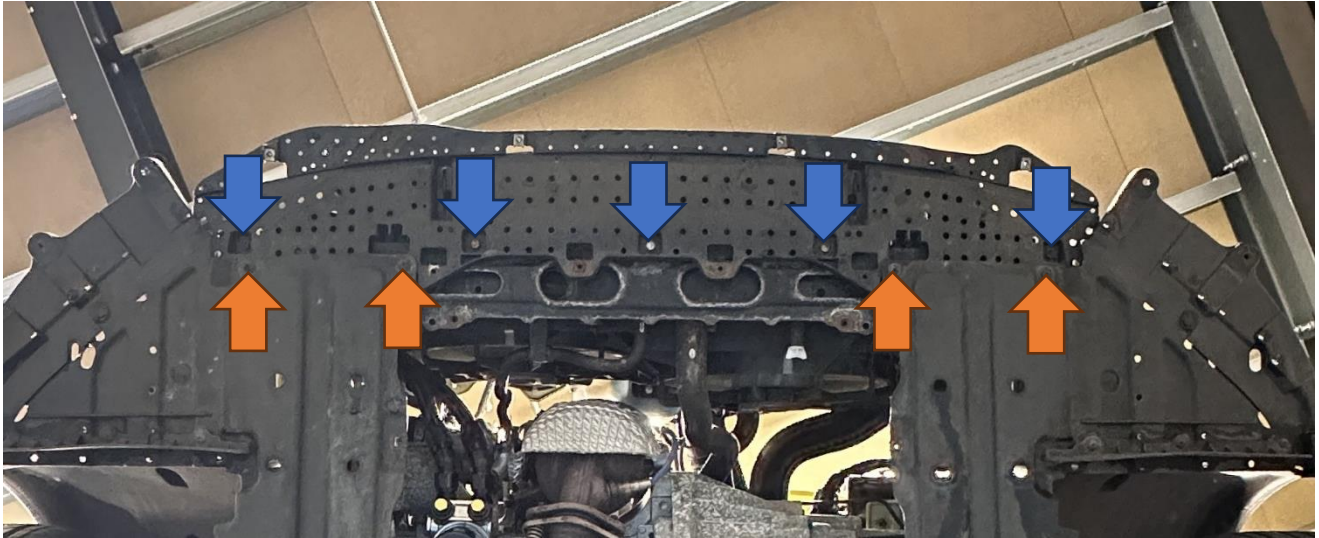
5. Whilst under the car it is possible to unplug the fog lights on each side by squeezing the clip and pulling it to release.



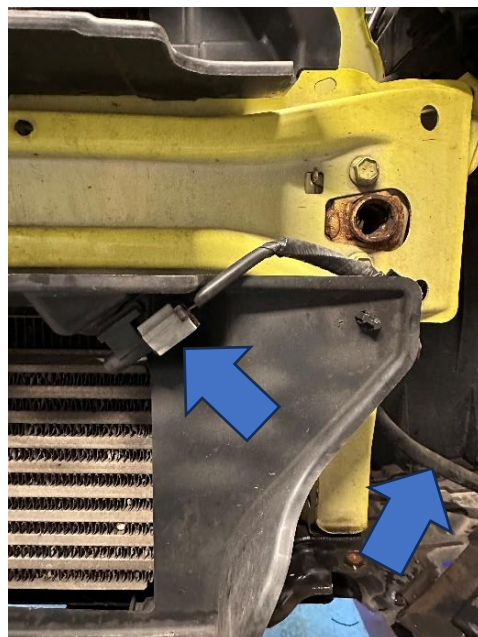
6. Using a second person to help, release the bumper by firmly but carefully pulling the corners before lifting the centre and pulling it away from the car. You can then place it safely aside.



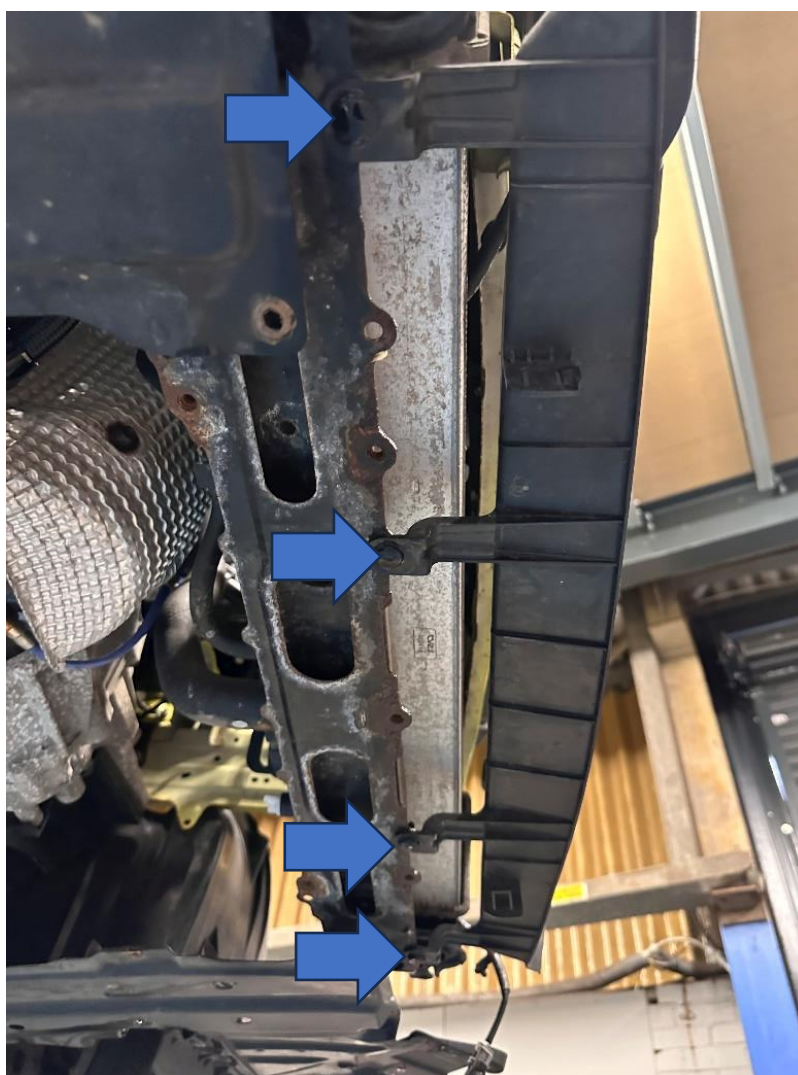
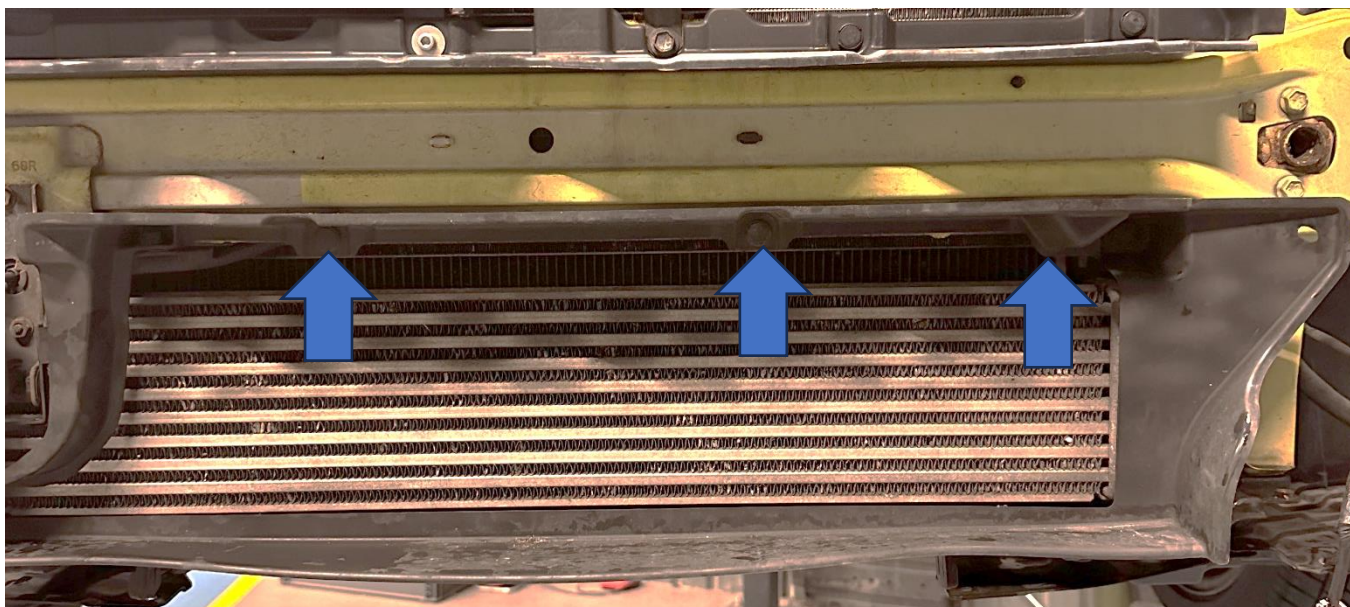
7. Remove the plastic support underneath the intercooler by undoing the four crosshead screws (orange arrows) and the nine 10mm bolts (blue arrows). There are two bolts each side that you gain access to by pulling the side pieces of the remaining undertray down. Then slide the support forward to remove it.



8. Remove the wiring harness for the radar assisted cruise control and then the outside air temperature sensor along with the sensor itself.



9. Remove the front air guide by using a trim removal tool to unclip the top three plastic clips followed by four more underneath. This will not be reused once the new intercooler is fitted.



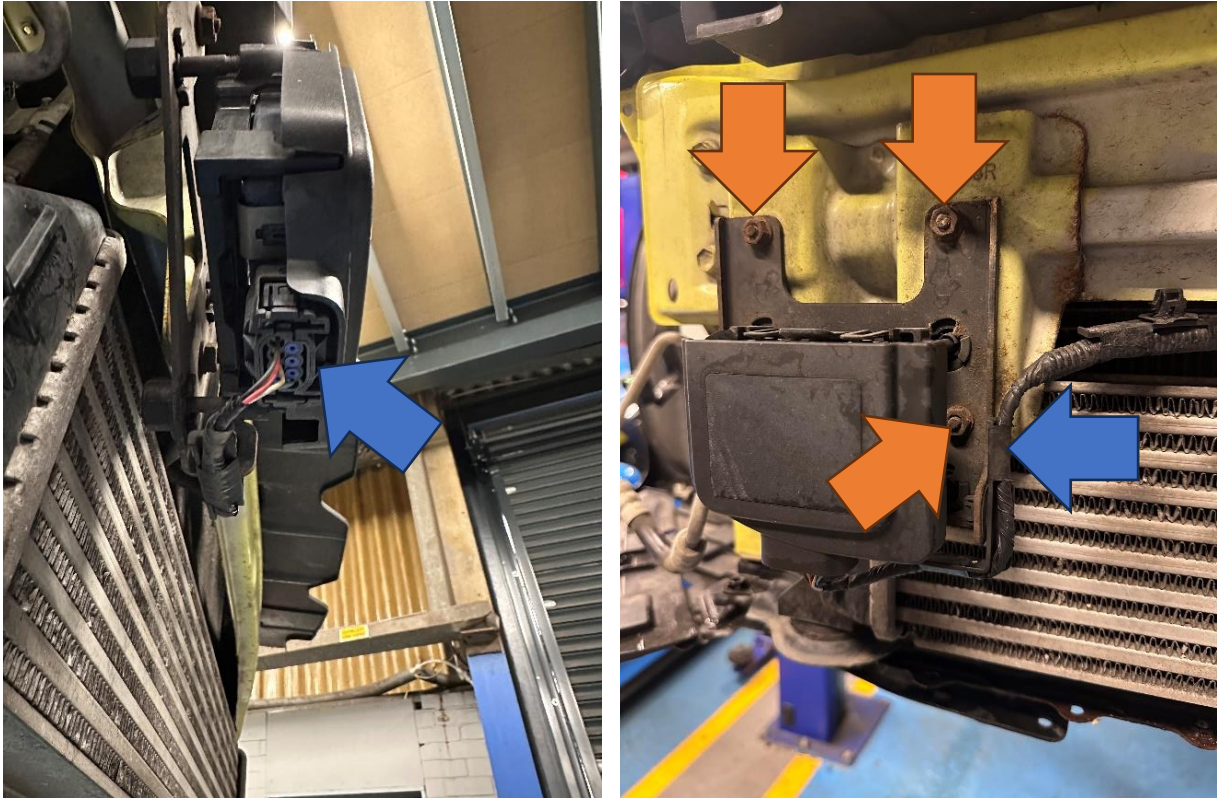
10. Now undo both the hose clamps on the intercooler and remove the hoses. The left-hand side hose can be accessed from the bonnet and the right-hand side can be accessed through the front of the wheel arch.



11. Secure the upper part of the radiator assembly on both sides using cable ties in a suitable place, as shown.



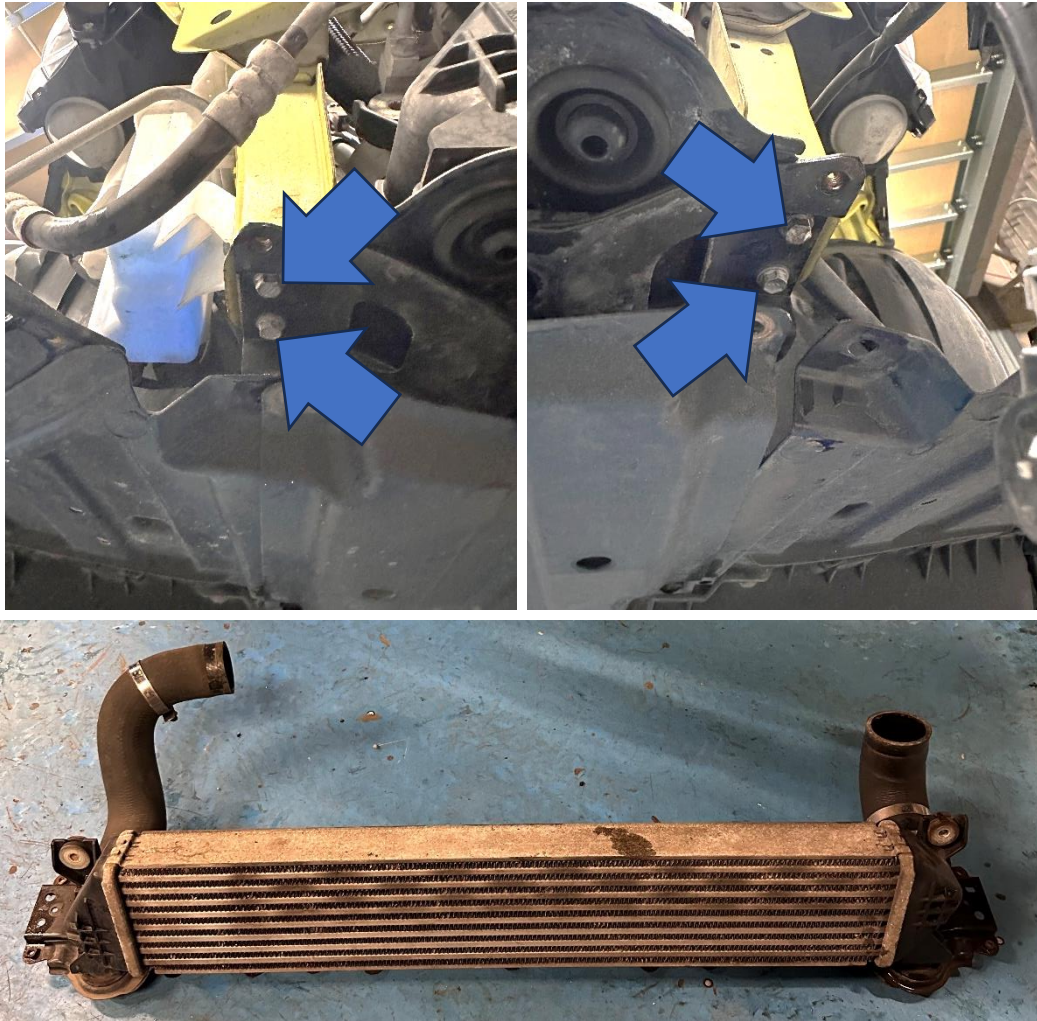
12. Release the radar by disconnecting the wiring plug and harness from the bracket (blue arrows) and then remove the bracket by undoing the three 10mm nuts (orange arrows).



13. Undo the two 10mm bolts holding the top of the intercooler in place.



14. Undo the 10mm bolts holding the lower radiator cradle in place. We recommend you do this with the help of a second person so they can support the cradle whilst you remove the bolts. The whole assembly will then come away with the intercooler and hoses attached.



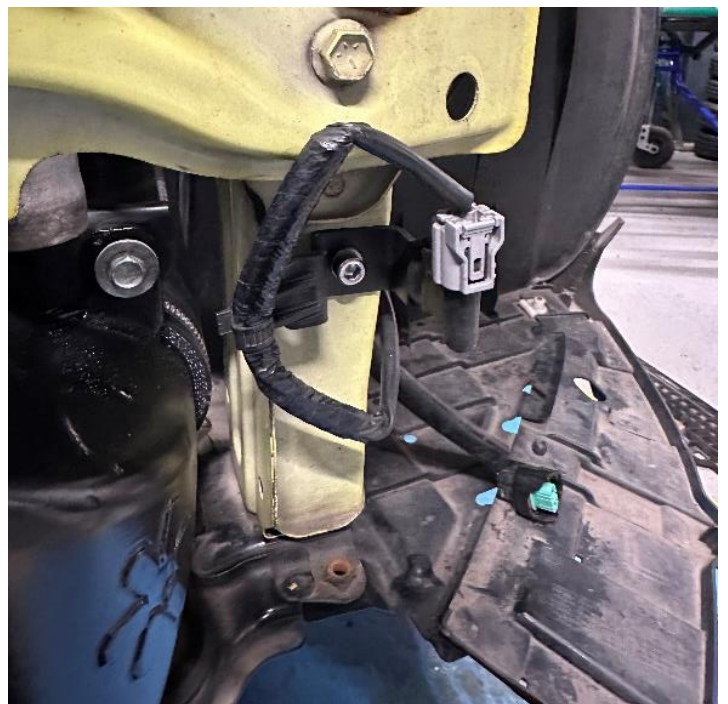
15. Install your new Pro Hoses silicone hoses with jubilee clips but leave them loose before lifting the new intercooler into place and reusing the two bolts removed in Step 13.



16. We recommend that you now tighten all the jubilee clips on the silicone hoses before reinstalling the lower radiator cradle, as they are easier to access at this stage. Use a second person to hold the cradle in place whilst you tighten the bolts up and once tightened you can then loosen the top bolts and adjust the intercooler as necessary so that the mounting pins sit in the rubbers before retightening the top bolts.



17. Install the supplied temperature sensor relocation bracket on the right-hand side using the supplied M6 bolt and washer and then clip the wiring harness and sensor in as pictured.



18. Finally, the car can now be reassembled in reverse of Steps 1 to 12.



AIRTEC 
MOTORSPORT

AIRTEC 
MOTORSPORT