

Ford Focus RS Mk3 Aluminium Undertray Fitting Instructions

Tools Required:

- T27 Torx Socket
- Trim Removal Tool
- 10mm Spanner

Kit Contents:

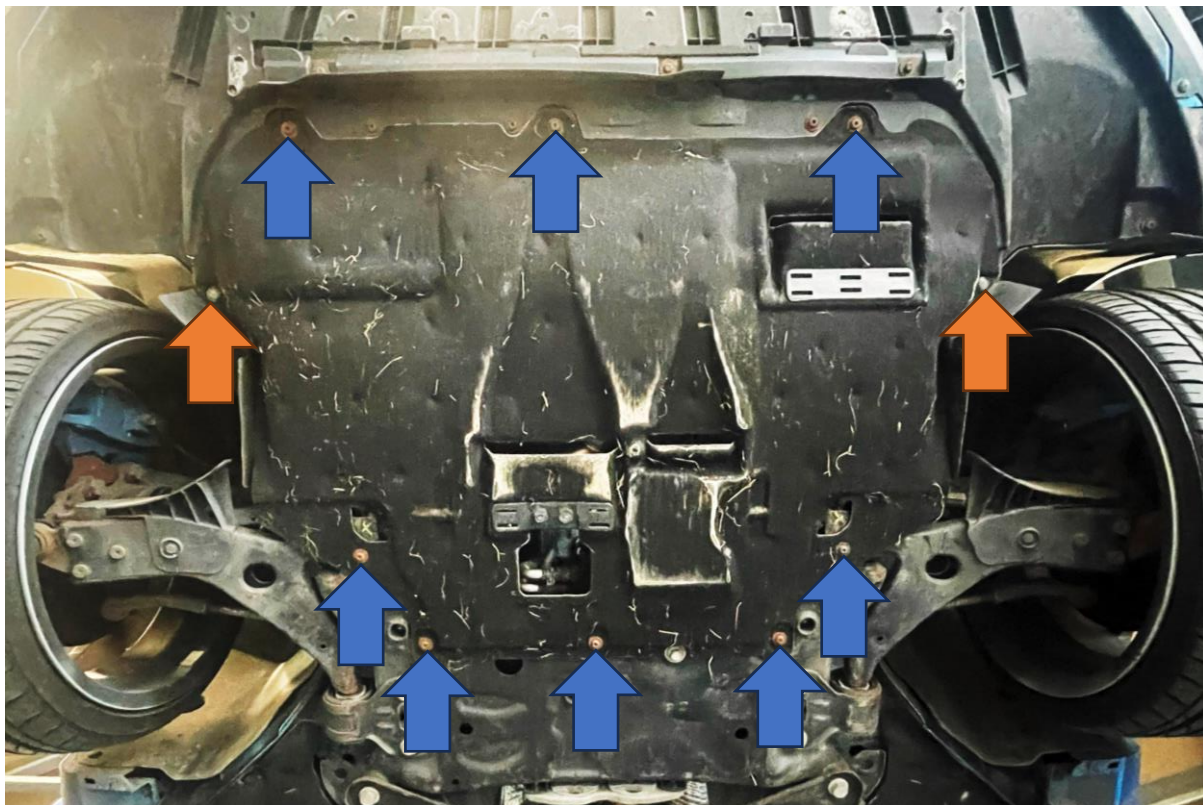
- 1x AIRTEC Motorsport Aluminium Undertray
- 2x M6x20mm Socket Head Bolts
- 2x M6 Nyloc Nuts
- 4x M6 Mudguard Washers



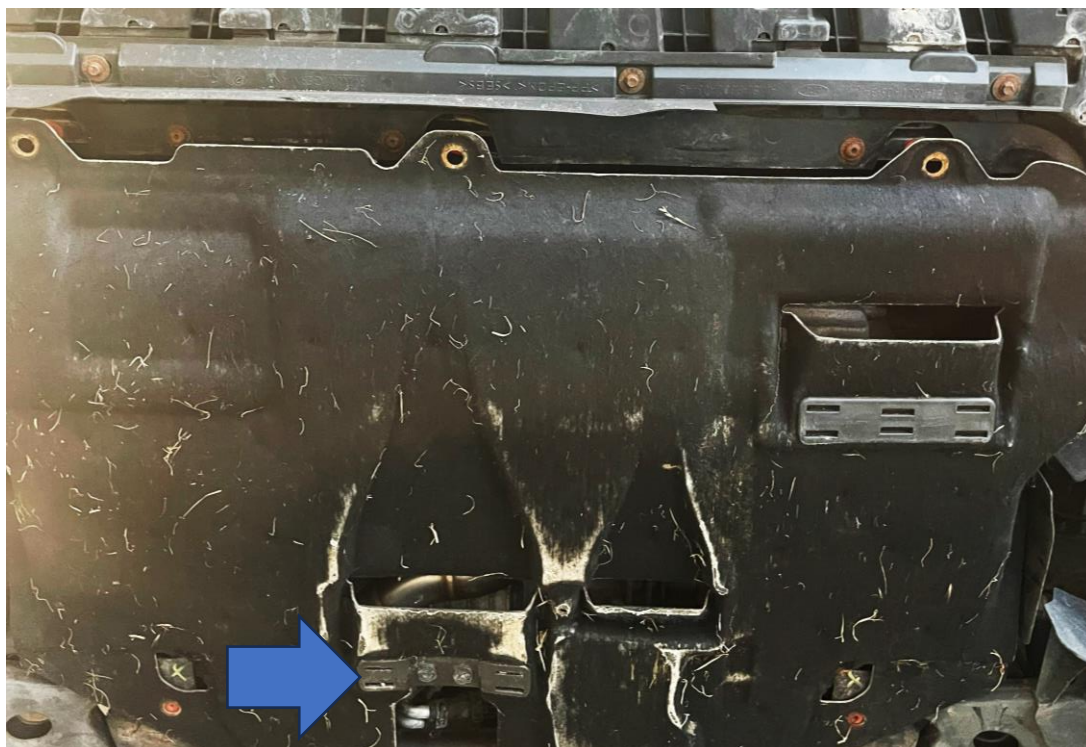
PLEASE THOROUGHLY READ THESE INSTRUCTIONS AND MAKE SURE YOU ARE FAMILIAR WITH THE STEPS BEFORE CARRYING THEM OUT

Instructions

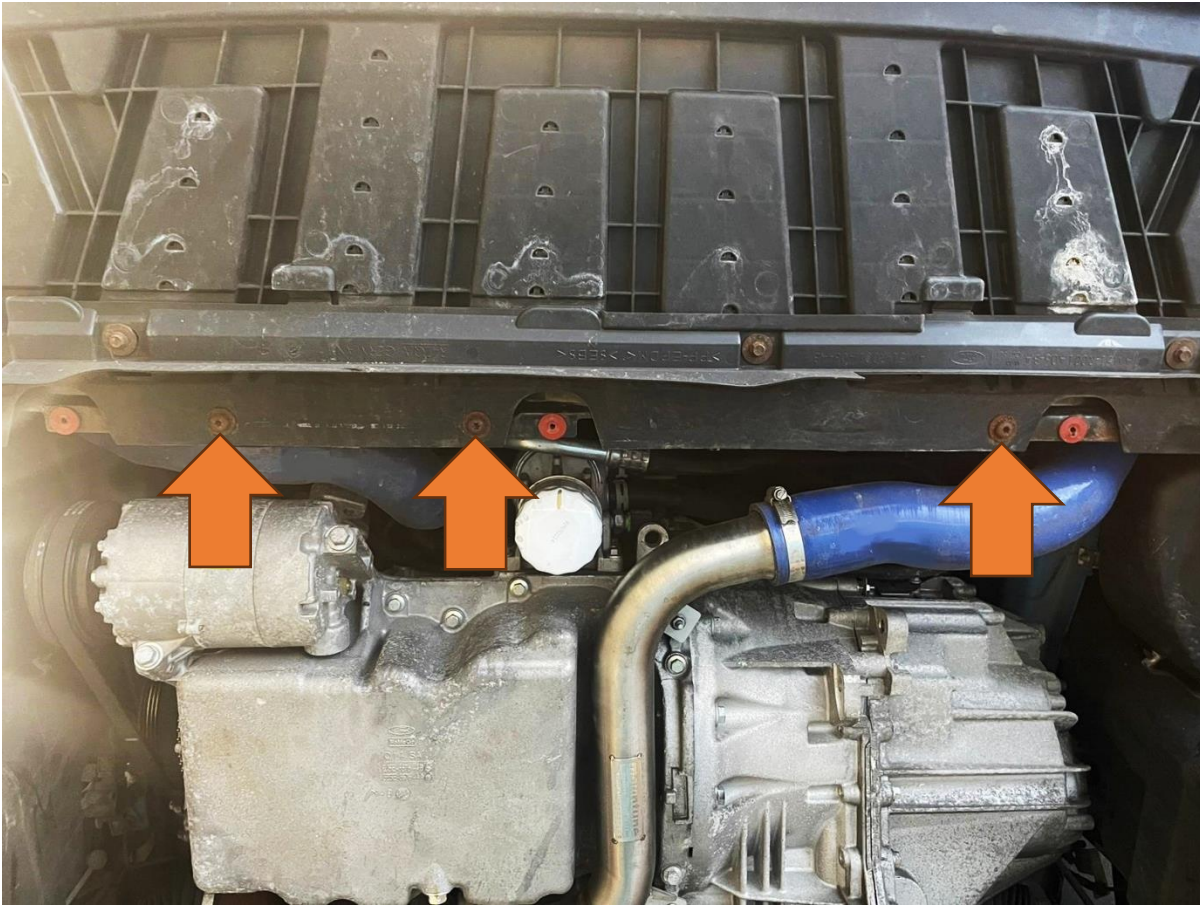
1. Undo the eight T27 Torx bolts (blue arrows) and two push fits (orange arrows).



2. To remove the undertray, unhook the centre section (blue arrow).



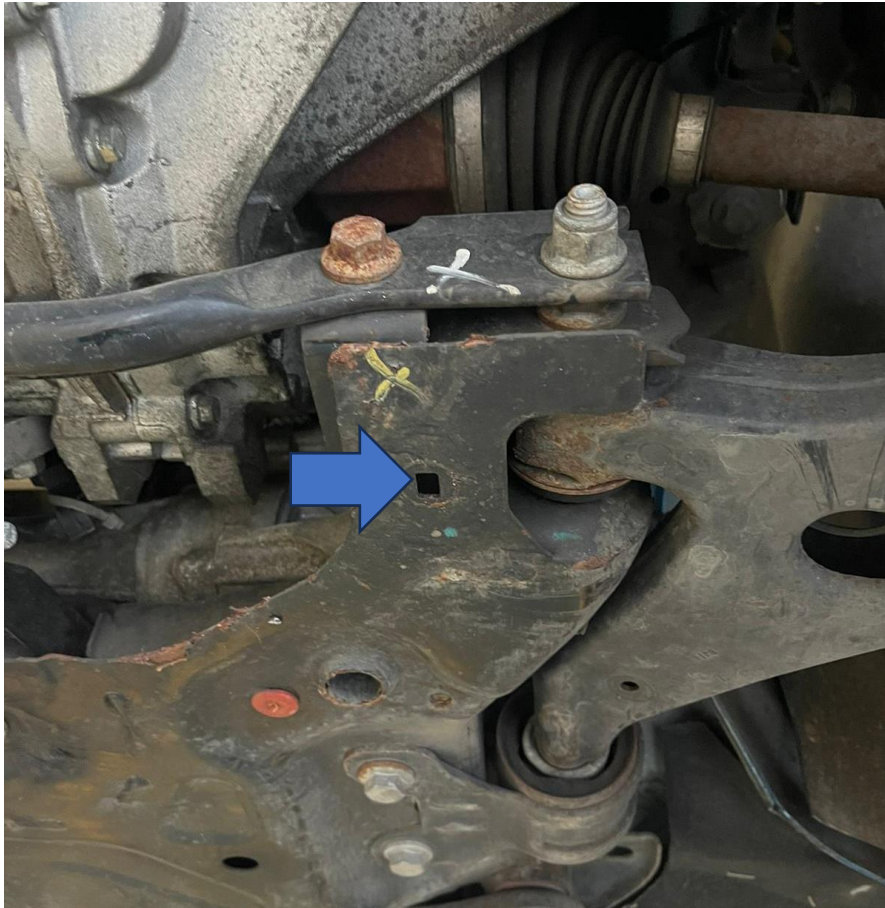
3. Now remove the three screws at the front of the car.



4. Remove the two screws attached to the arch liners.



5. Remove the two plastic screw inserts from the subframe.



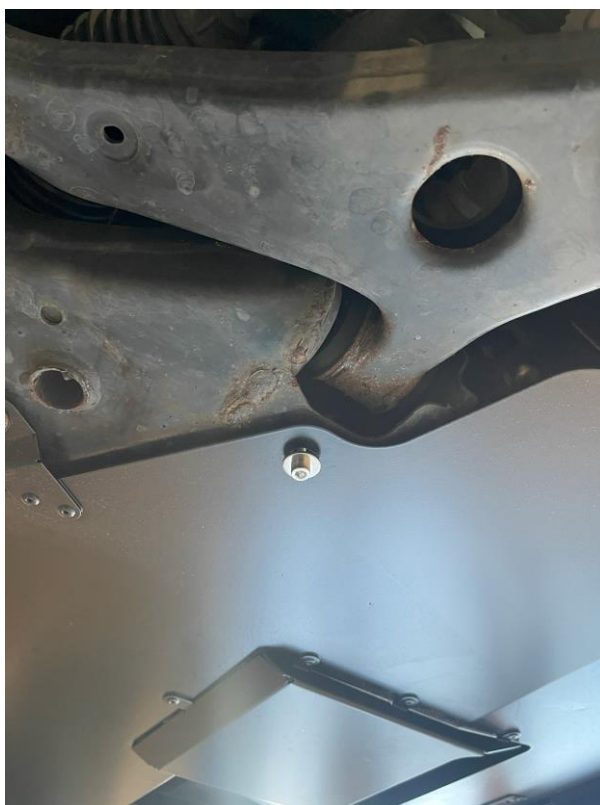
6. Fit the AIRTEC Motorsport undertray in position by hooking the vent over the lower brace bar.



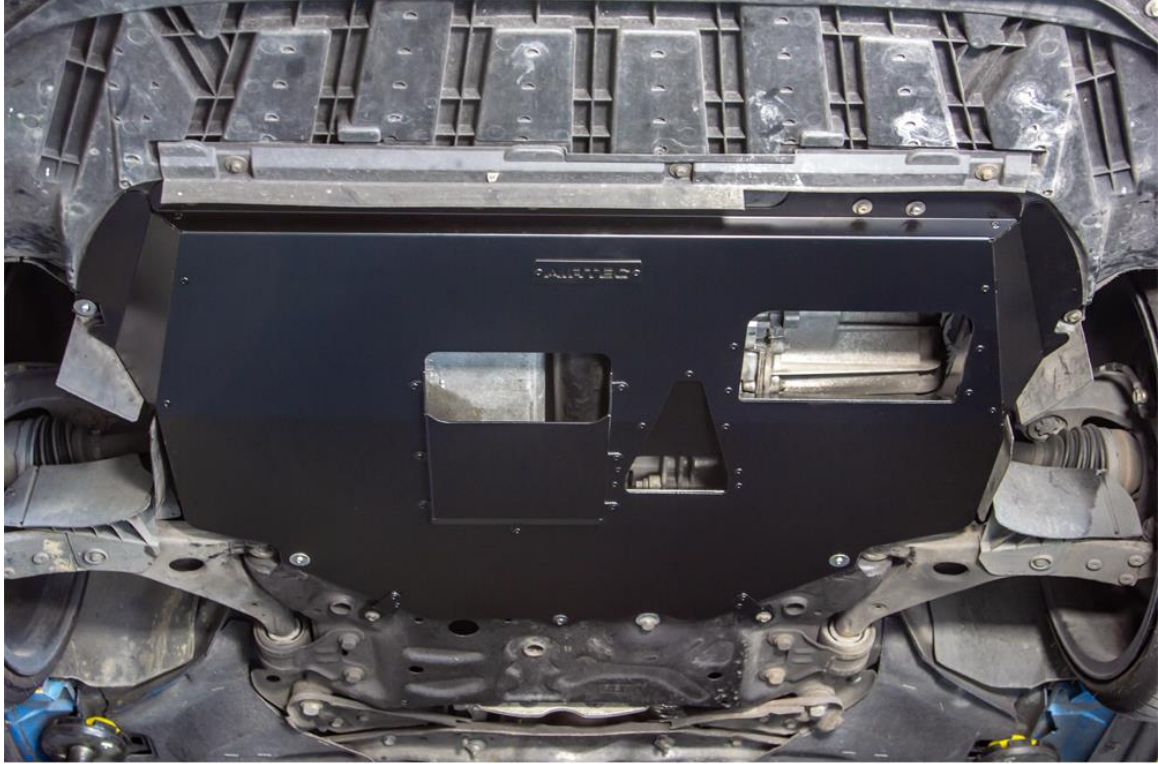
7. **As long as they are in good condition**, reuse the original screws to install the AIRTEC Motorsport undertray, as well as the three extra screws on the front that were removed in Step 3.



8. Use the supplied bolts and nuts with washers to secure each side of the undertray through the hole left by the plastic inserts removed in Step 5.



9. Finally, make sure all fittings are tight and secure.



AIRTEC ✖
MOTORSPORT

AIRTEC ✖
MOTORSPORT