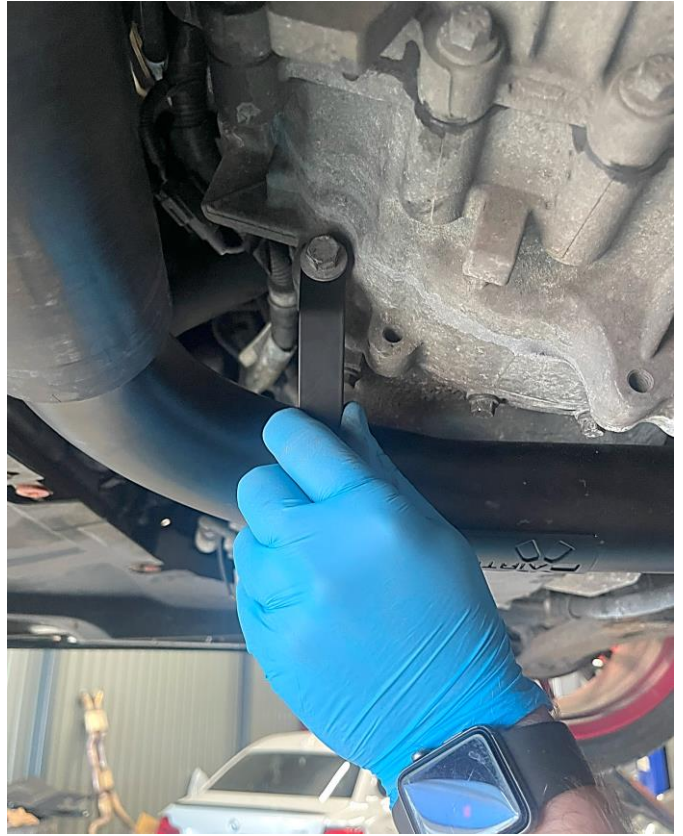


# Ford Focus Mk2 2.5" Big Boost Pipe Kit Bracket Locations

1. Bracket One connects to the bottom front gearbox bolt. This bolt doesn't need to be removed, just loosened to allow the U-shape bracket to slide underneath. Use the supplied M6 bolt and washer to secure the pipe. Do not fully tighten this yet to allow adjustment for the second bracket to fit.



2. Bracket Two attaches to the rear of the gearbox using the same process; do not remove the bolt, simply loosen and slide the 90-degree, U-shaped bracket under the bolt. Then use the second supplied M6 bolt and washer to secure to the pipe. Once in position, fully tighten both the bolts for both brackets.

