

Audi RSQ3 (8U) Intercooler

Fitting Instructions

Tools Required:

- Ratchet & Socket set, including Torx bits
- Trim Removal Tool or Flat-Blade Screwdriver

Kit Contents:

- 1x AIRTEC Motorsport Intercooler
- 2x Mounting Brackets
- 2x M6x12mm Socket Head bolts
- 2x M6 Washers



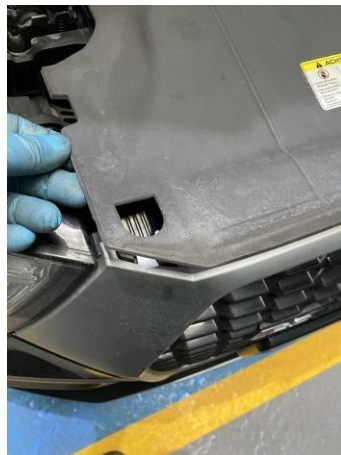
PLEASE THOROUGHLY READ THESE INSTRUCTIONS AND MAKE SURE YOU ARE FAMILIAR WITH THE STEPS BEFORE CARRYING THEM OUT

Instructions:

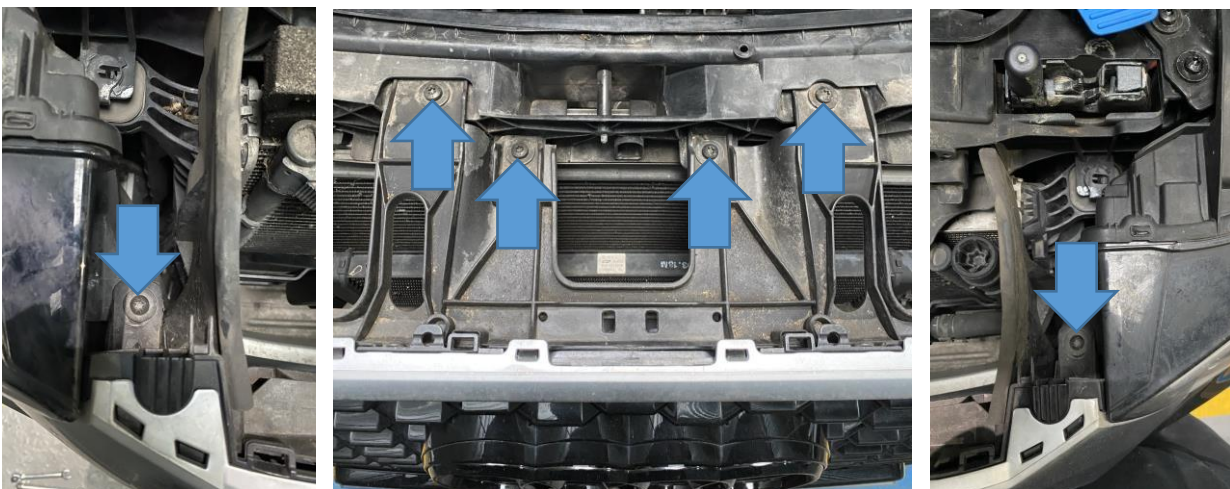
1. Raise the vehicle up in to the air using either a vehicle ramp or jack and axle stands following the manufactures recommendations, open the bonnet and secure.



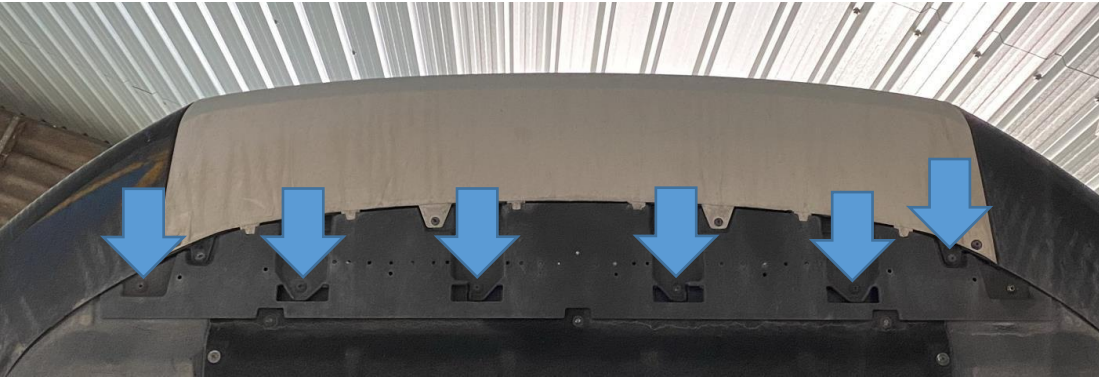
2. Remove the front upper panel by lifting at the edge and then pull the panel out.



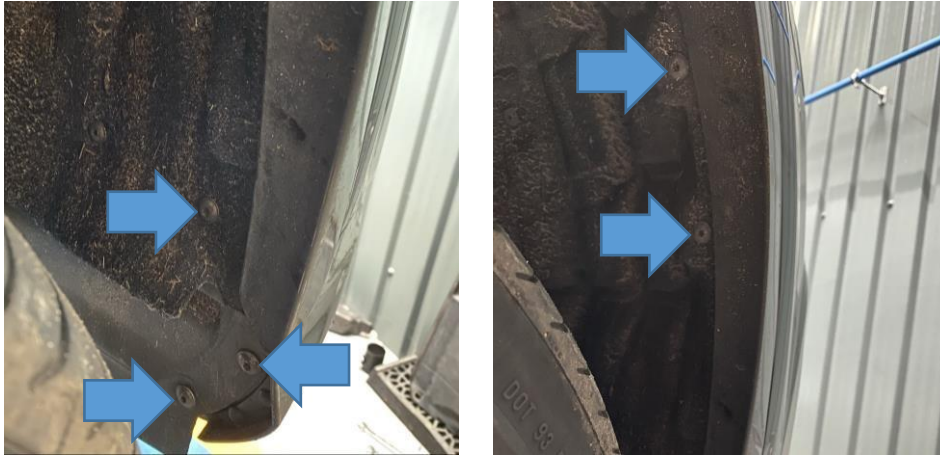
3. Undo the six T27 Torx bolts that are underneath, four in the middle and one either side.



4. Underneath the car now, remove the six T20 Torx bolts along the underside of the front bumper.



5. Inside each arch liner, remove the five T20 Torx bolts highlighted.



6. Now pull the arch extension away from the body by twisting the lower edge outwards whilst reaching behind and pushing in the plastic clip (highlighted with blue arrow), which will release the lowest point of the extension. Repeat this working up the arch until you have access to the Torx bolt holding the bumper to the wing. You can see the clips that you need to push in blue and the other clip is the one you have to twist the arch extension out to release.



7. Undo the T20 Torx bolt that holds the bumper to the wing on the each side and with the help of a second person, firmly but carefully pull each corner of the bumper away to release it. Before removing it completely, one person should support the bumper whilst the other person releases the wiring harness attached to the bumper. Then put the bumper safely to one side.



8. The original intercooler and crash bar can now be removed. Start by loosening the jubilee clips on the intercooler hoses and remove them.



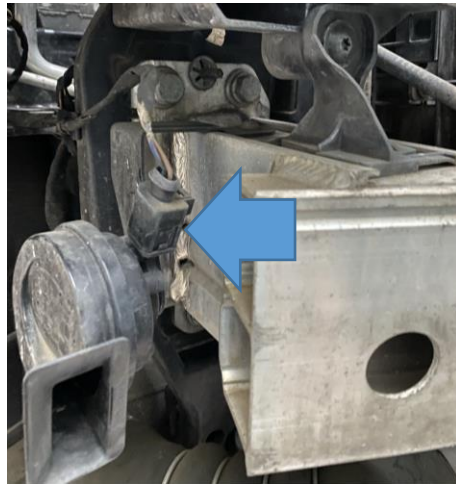
9. Unbolt the top of the intercooler by undoing the 10mm bolt on each side.



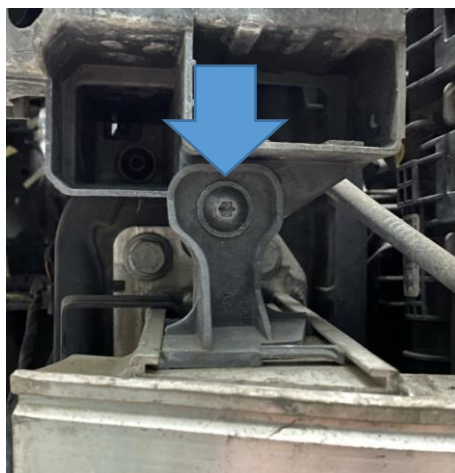
10. Unbolt the T27 Torx bolts holding the brackets underneath. These are the last fixings holding the intercooler in place, so be sure to support it as you undo the last bolt.



11. With the intercooler removed, the next step is to remove the original crash bar. Start by unplugging the horn on each side of the crash bar.



12. Remove the two T27 Torx bolts holding the plastic bracket to the front of the car.



13. Now unbolt the crash bar by removing the three 13mm bolts on each side (highlighted with blue arrows), and then removing the retaining washer using a flat-bladed screwdriver or trim tool (highlighted with orange arrow). The crash bar then twists forward and can be removed.



14. Remove the T20 Torx bolts securing the horns to the original crash bar and fit to the rear mounting bosses on the AIRTEC Motorsport crash bar.



15. Before fitting the new intercooler, fit the two brackets facing forwards with the supplied bolts and washers, as pictured. Leave the bolts loose at this stage to allow adjustment when fitting.



16. Install the intercooler using a second person to help support it whilst tightening the bolts and then refit the horns. Reuse the original bolts removed in Steps 12 to 14 and fully tighten when happy with fitment. Then plug the horns back in, refit the hoses and tighten the jubilee clips.

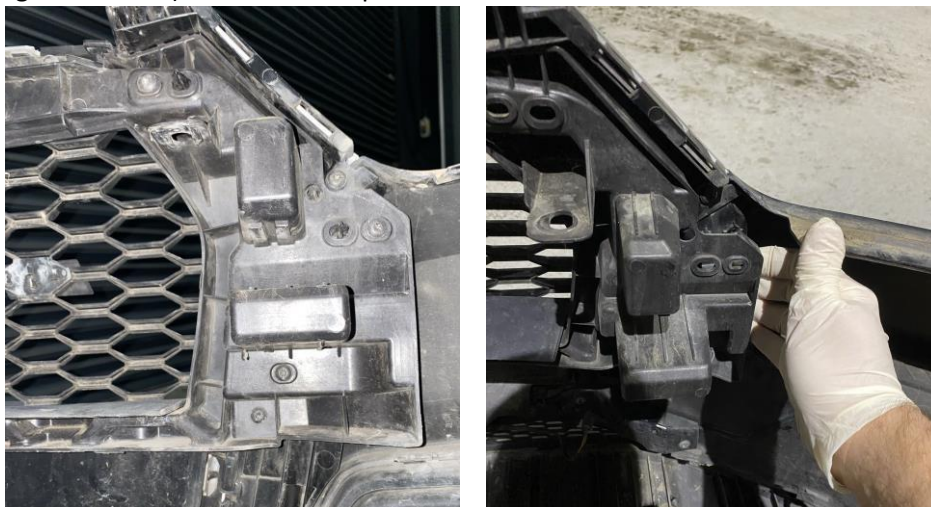


You can now refit the bumper to the vehicle, however we recommend for increased airflow and maximum performance to follow the below steps to remove the centre section of the grille that blocks some of the airflow.

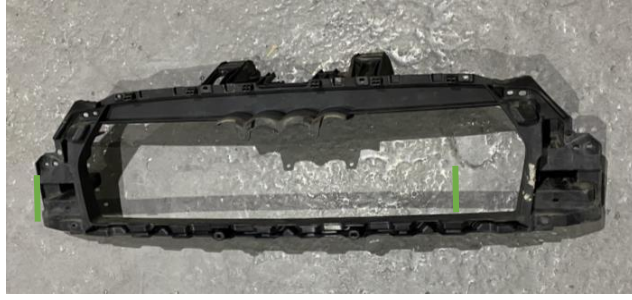
17. On the back of the bumper, remove the foam filling by pulling it out from either end.



18. Now remove 16 T20 Torx bolts holding in the rear plastic support (four along the top, four each side and then four along the bottom). Once undone pull from both sides and it will release.



19. The large plastic section can be pulled apart from the surround and then we recommend you cut out the support at the bottom as it is only in place for the centre section to bolt to. In order to do that cut as shown below, try to get the cut close as possible to the edge for a neater finish.



20. The surround can now be reinstalled using 14 of the original fixing to hold it in place.



21. Finally, the bumper can then be reinstalled in the reverse of Steps 2 to 7. Please note; when reattaching the arch extension removed in Step 6 you may need to lift the back corner of the bumper over the inner lip to get the clips to fully seat home.

