

BMW F87 M2 Rear Wing Fitting Instructions

Tools Required:

- Masking Tape
- 7mm Drill Bit and Drill
- 4mm Allen Key
- 5mm Allen Key

Kit Contents:

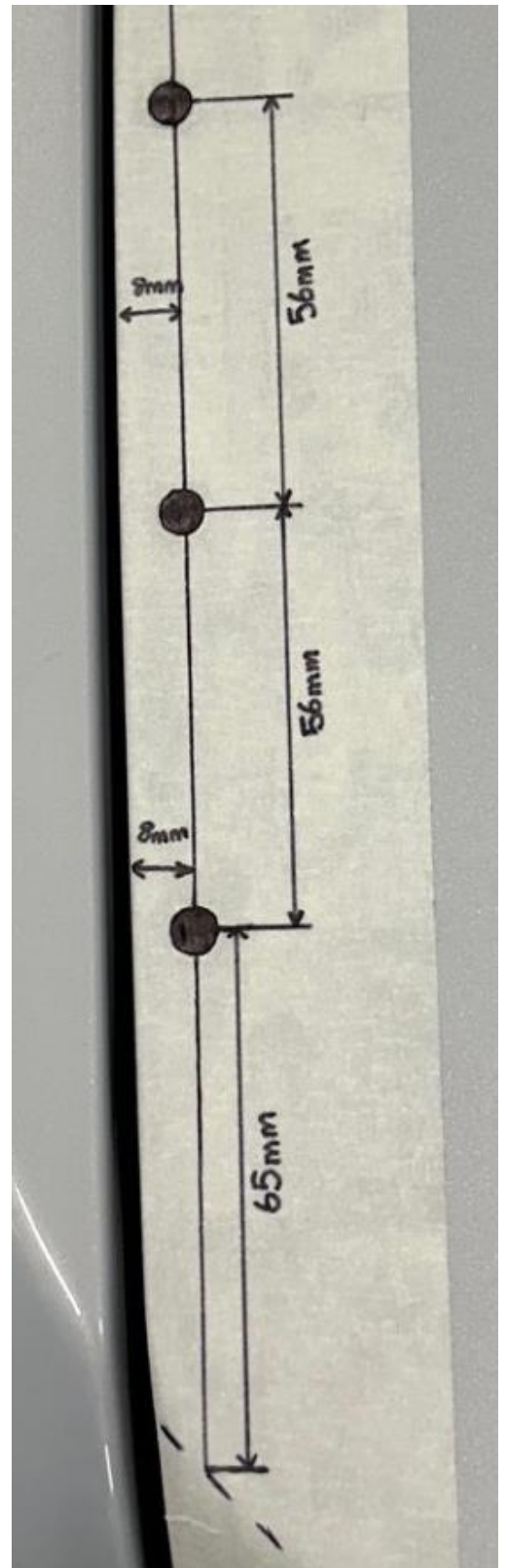
- 1x Centre Blade
- 2x End Plates (Left- and Right-handed)
- 2x CNC Mounting Brackets (Left- and Right-handed)
- 6x M6x18mm Socket Head bolts
- 6x M6 Large Washers
- 4x M8x18mm Button Head bolts
- 4x M8 Pan Washers
- 4x M6x20mm Button Head bolts
- 4x M6 Pan Washers



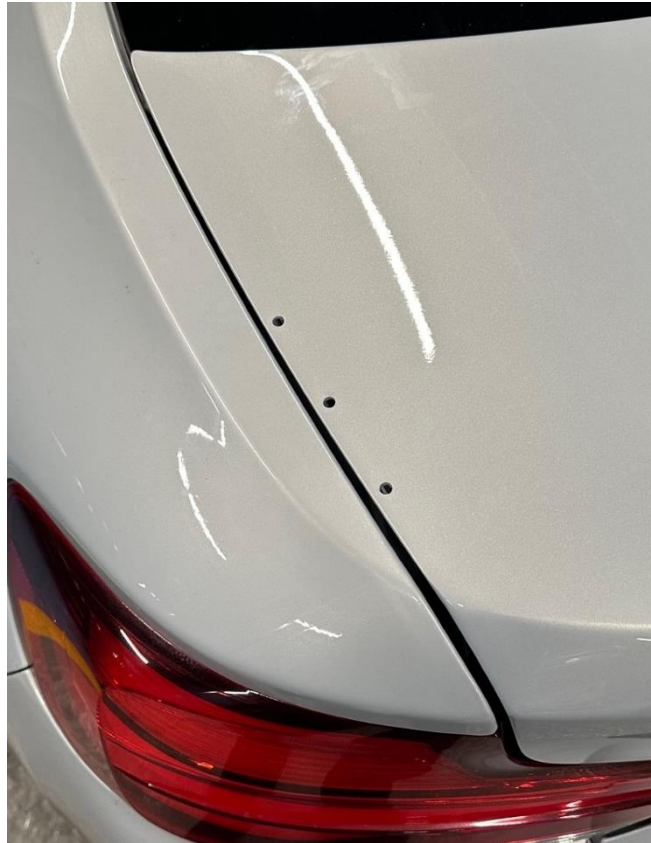
PLEASE THOROUGHLY READ THESE INSTRUCTIONS AND MAKE SURE YOU ARE FAMILIAR WITH THE STEPS BEFORE CARRYING THEM OUT

Instructions:

1. Start by marking the boot lid for drilling using masking tape. The image below shows exactly how to mark out the hole locations so please study it carefully; measure 8mm from the boot edge and draw a parallel centre line. Then measure 65mm from the boot lid's edge using the centre line to make a drilling location. Now measure 56mm from the first drilling location and repeat to produce for the second and third locations.



- Using a 7mm drill bit take your time to carefully make the three holes and then remove the masking tape.



- Take the correctly sided CNC billet boot bracket (please study picture closely) and secure from underneath using three of the supplied M6x18mm Socket Head bolts with large M6 washers. **Do not fully tighten to allow for movement in following steps.**



4. Now attach the rear wing end plate using the supplied M8x18mm Button Head bolts with M8 washers to secure in place. **Do not fully tighten yet to allow for movement in the following steps.**



5. Repeat the previous steps on the opposite side. Once complete, mount the centre blade in place using the supplied M6x20mm Button Head bolt with small M6 washers.



6. Finally, once happy with the fitment, fully tighten all bolts.



AIRTEC 
MOTORSPORT

AIRTEC 
MOTORSPORT