

Suzuki Swift MHEV Cold Air Feed Fitting Instructions

Tools Required:

- Jubilee Clip Flexi-driver or Flat-Blade Screwdriver
- 10mm Socket with Long Extension and Ratchet
- Narrow Trim Removal Tool

Kit Contents:

- 1x Induction Air Feed Plate (In)
- 1x Induction Air Feed Plate (Out)
- 1x Black Trunking
- 2x 80mm Jubilee Clips



PLEASE THOROUGHLY READ THESE INSTRUCTIONS AND MAKE SURE YOU ARE FAMILIAR WITH THE STEPS BEFORE CARRYING THEM OUT

Instructions:

1. Start by removing the 10mm bolts along the top of the bumper with two plastic trim clips.



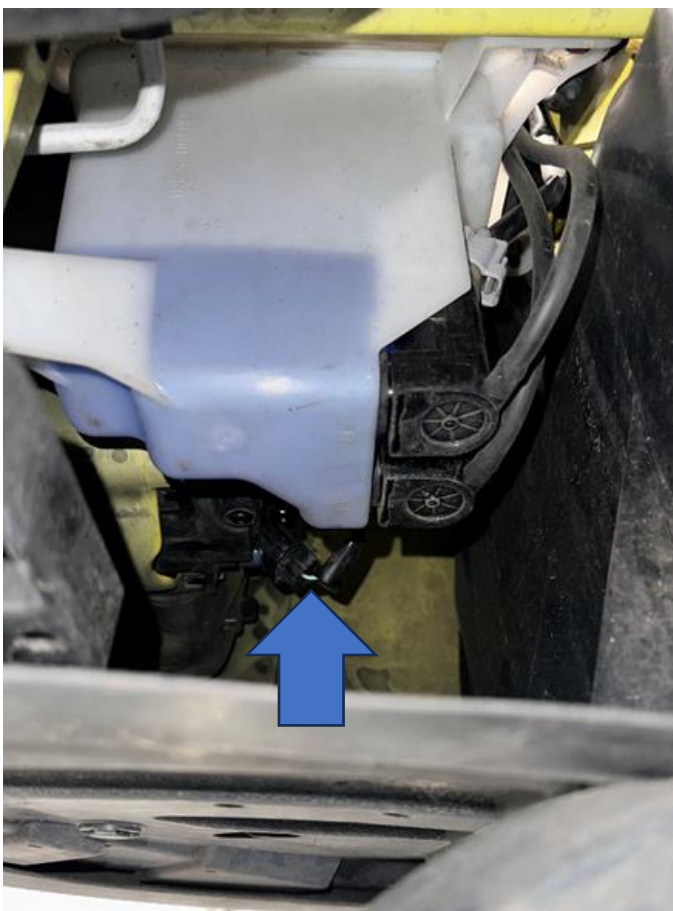
2. In each wheel arch, remove the screw attaching the bumper to the wing.



3. Undo the screws (blue arrows) holding the bottom of the bumper to the car along with two plastic push fits (orange arrows).



4. Whilst under the car, it is possible to unplug the fog lights on each side by squeezing the clip and pulling it to release.



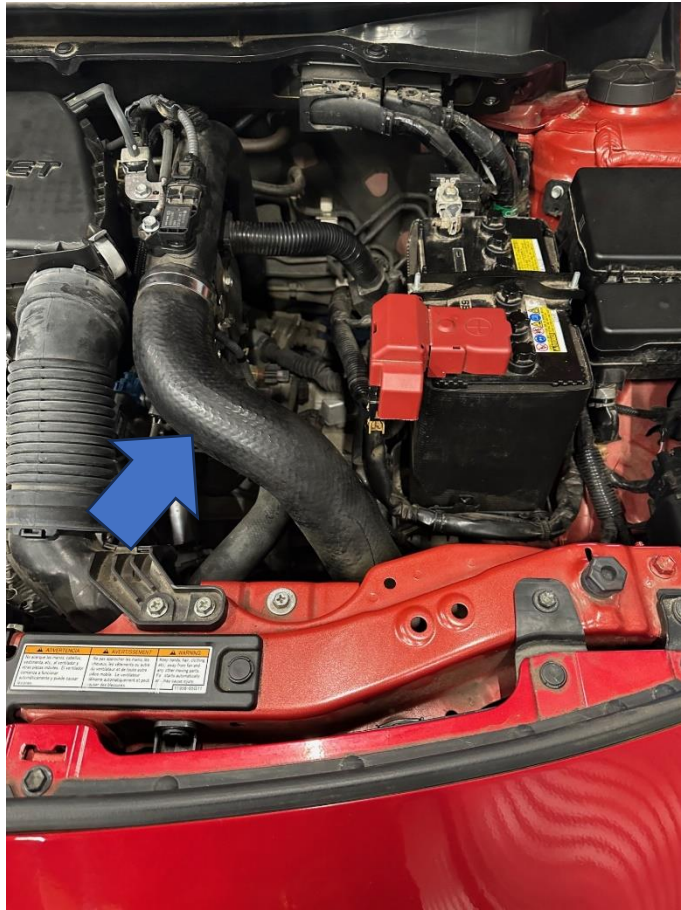
- Using a second person to help, firmly but carefully pull the corners of the bumper to release it before lifting the centre and pulling away from the car.



- Now remove the passenger side (right-hand drive) fog light and fit the supplied AIRTEC Motorsport induction feed plate. Reuse the existing bolts to secure in place.



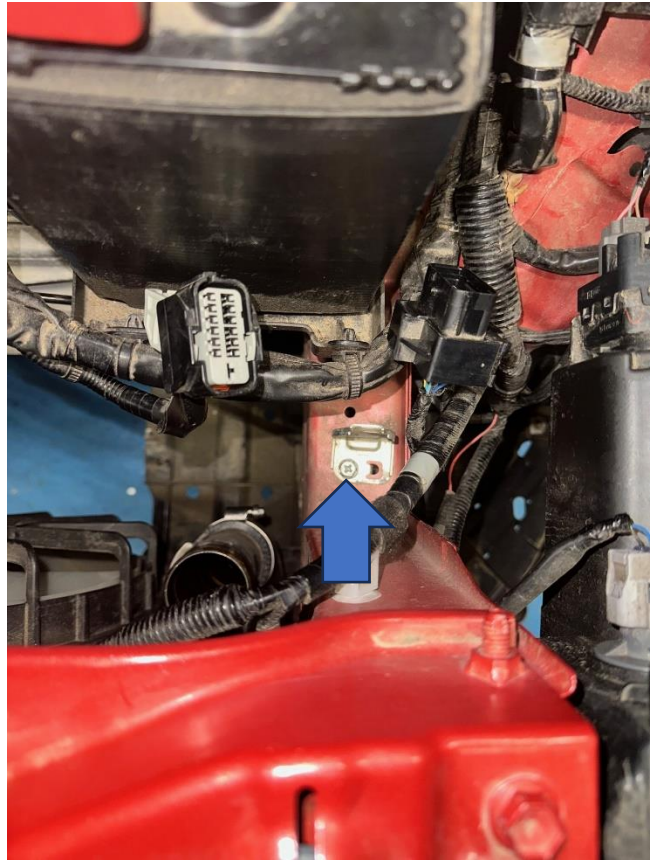
7. Now remove the boost pipe located in front of the battery.



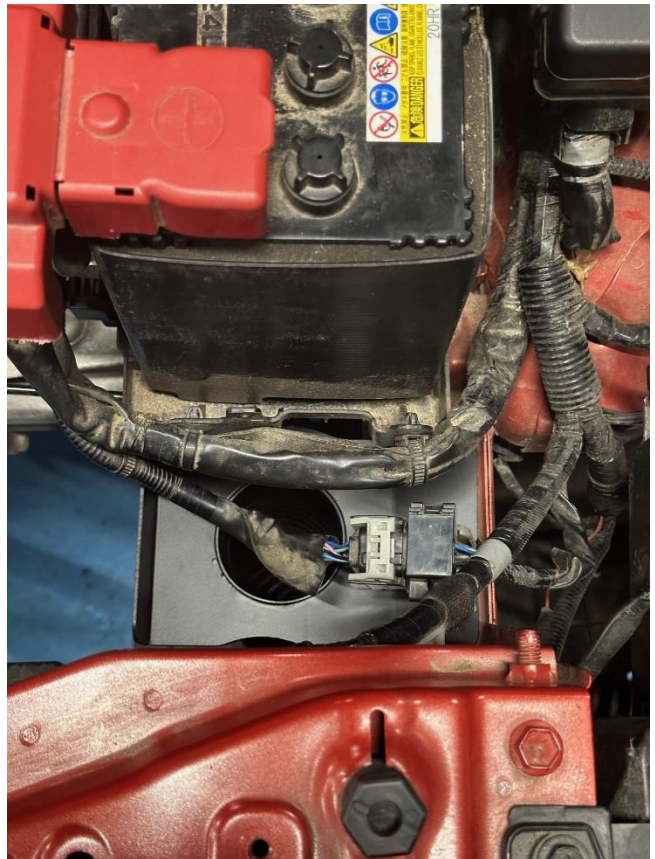
8. Attach the trunking to the other induction air feed plate with the supplied 80mm jubilee clip.



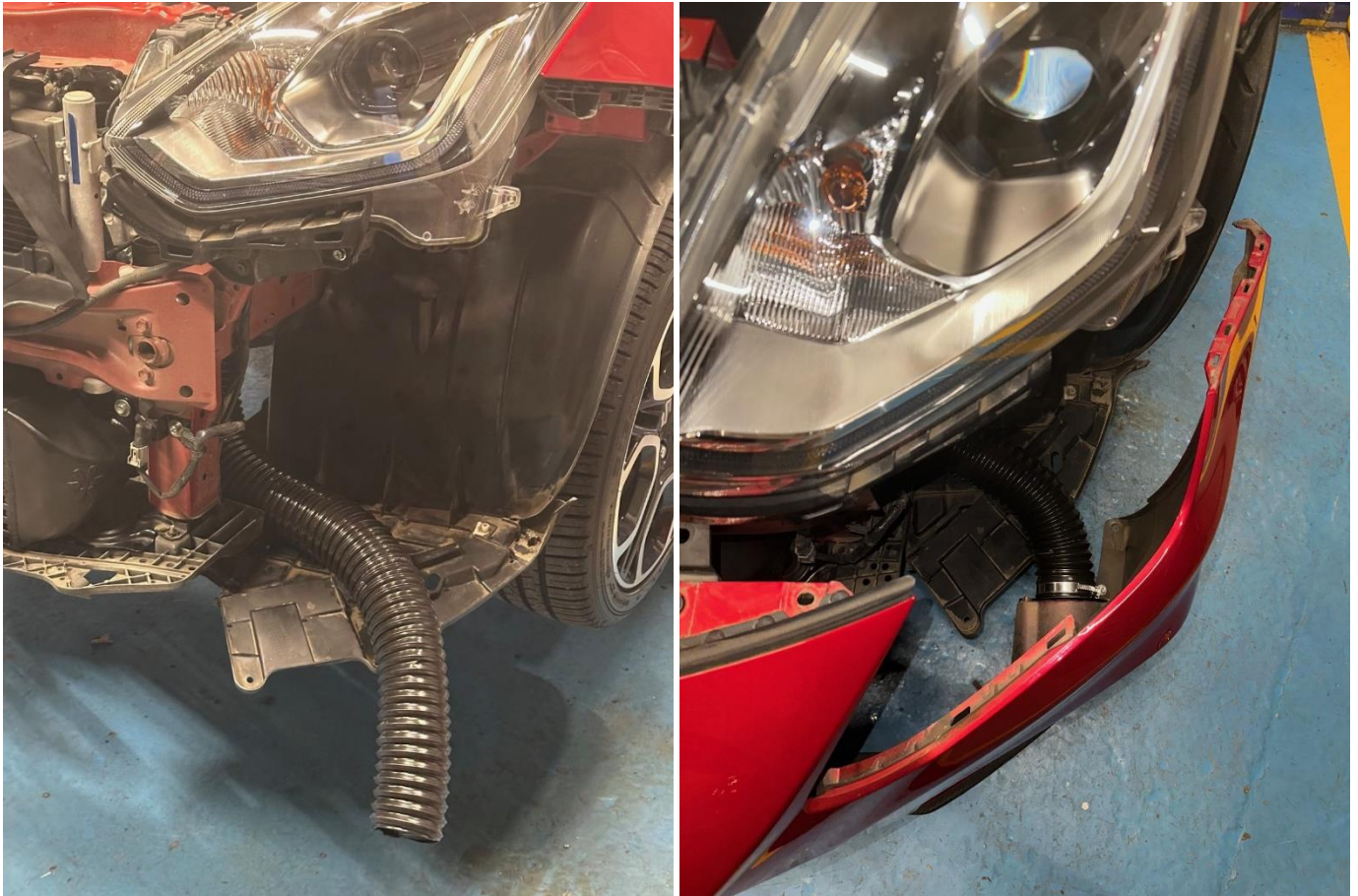
9. Locate the electrical connector in front of the battery and disconnect the plugs. Then release it from the mounting tab underneath and **loosen** the 10mm bolt securing it – it does not need to be removed.



10. Slide the induction air feed with trunking under the mounting tab and then tighten the bolt. You can then reattach the connector plug, as shown.



11. Route the trunking out as shown and then bring the bumper close enough to connect it to the air feed plate in the fog light location using the provided 80mm jubilee clip.



12. Finally, refit the boost hose removed in Step 7 and then the bumper in reverse of removal.

